



ENVIRONMENTAL
FINANCE CENTER



CLIMATE ACTION AT THE LOCAL LEVEL:

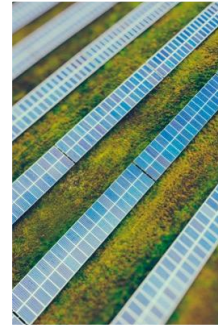
DEFINING THE CHALLENGE, FINDING THE FUNDS

August 1st, 2025

SPEAKING THE SAME LANGUAGE: KEY CLIMATE TERMS



Mitigation: actions to reduce greenhouse gas emissions

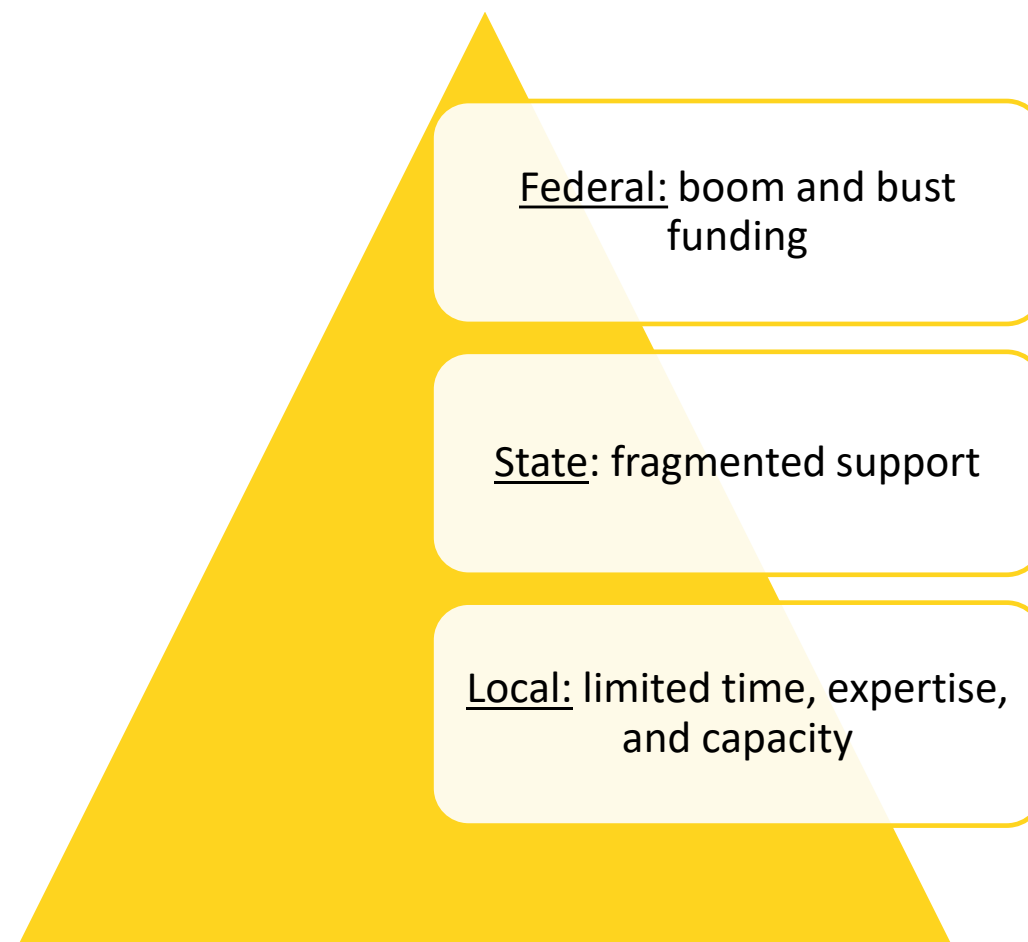


Adaptation: actions to prepare for climate impacts



Resilience: capacity to respond and recover from climate impacts

THE CLIMATE MITIGATION FUNDING LANDSCAPE



SUSTAINABLE MARYLAND PROGRAMS

- Municipal certification
 - Certification report repository
- Grants
- Trainings and webinars
- Networking and partnership opportunities





SM GRANT PROGRAMS

SM ACTION GRANT OVERVIEW

- \$100,000 in available funding
- Grant launch: Early Fall
- Topics:
 - Any project that relates to the [10 SM Action Action Categories](#)

SM Registered Communities	SM Certified Communities
<ul style="list-style-type: none">• Eligible for up to \$5,000• A total of \$20,000 available• Up to 4 awards expected	<ul style="list-style-type: none">• Eligible for up to \$20,000• A total of \$80,000 available• Up to 4 awards expected



EXELON SUSTAINABLE COMMUNITIES GRANTS



Pepco

- Open to municipalities and 501(c)3's in the Pepco Territory
- \$125,000 available
- \$10,000 for Environmental Stewardship
- \$25,000 for Climate Resilience

Delmarva Power

- Open to municipalities and 501(c)3's in the DMP Territory
- \$45,000 available
- \$10,000 for Environmental Stewardship
- \$15,000 for Climate Resilience

LOCAL GOVERNMENT ENERGY MODERNIZATION GRANT (L-GEM)

- **Anticipated FY26 Budget:** \$64 million total:
 - \$50 million anticipated for planning activities and renewable energy projects
 - \$10 million anticipated for energy efficiency projects
 - \$4 million anticipated for electrification projects
- **Application Deadline:** 5:00 P.M. ET, December 5, 2025
- **Eligible Applicants:** Only incorporated towns, cities, and counties of Maryland may apply.





ENVIRONMENTAL
FINANCE CENTER



COMMUNITY EXAMPLE

CHESTERTOWN: CREATING CONNECTIONS AND FOSTERING PARTNERSHIPS



CONTACT US!



ENVIRONMENTAL
FINANCE CENTER



Questions about Sustainable Maryland Grants?

smgrants@umd.edu

Questions about the SM certification or registration?

Leo Pierce

opierce@umd.edu

301-405-9424